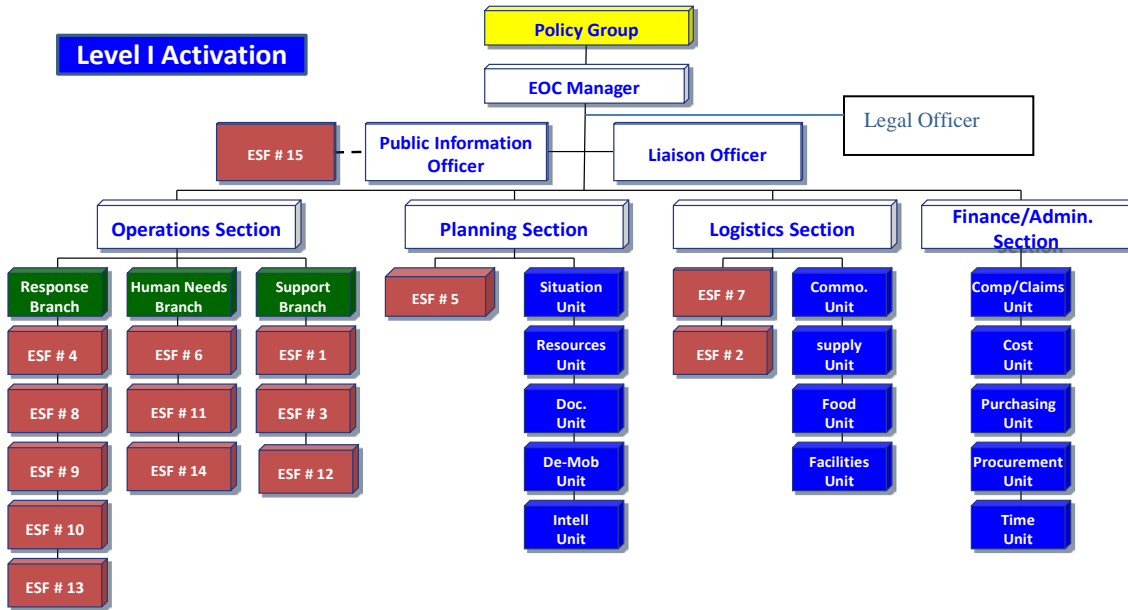


Organization of the Emergency Operations Center (EOC)

# Ogden City Organizational Chart



Emergency Support Function (ESF)

- ESF #1 - Transportation
- ESF #2 - Communications
- ESF #3 - Public Works, Engineering & Building Services
- ESF #4 - Firefighting
- ESF #5 - Emergency Management
- ESF #6 - Mass Care, Housing & Human Services
- ESF #7 - Resource Support
- ESF #8 - Public Health & Medical Services
- ESF #9 - Urban Search & Rescue
- ESF #10 - Hazardous Materials Response
- ESF #11 - Community Resources
- ESF #12 - Energy
- ESF #13 - Public Safety & Security
- ESF #14 - Long-Term Community Recovery & Mitigation
- ESF #15 - Public Information