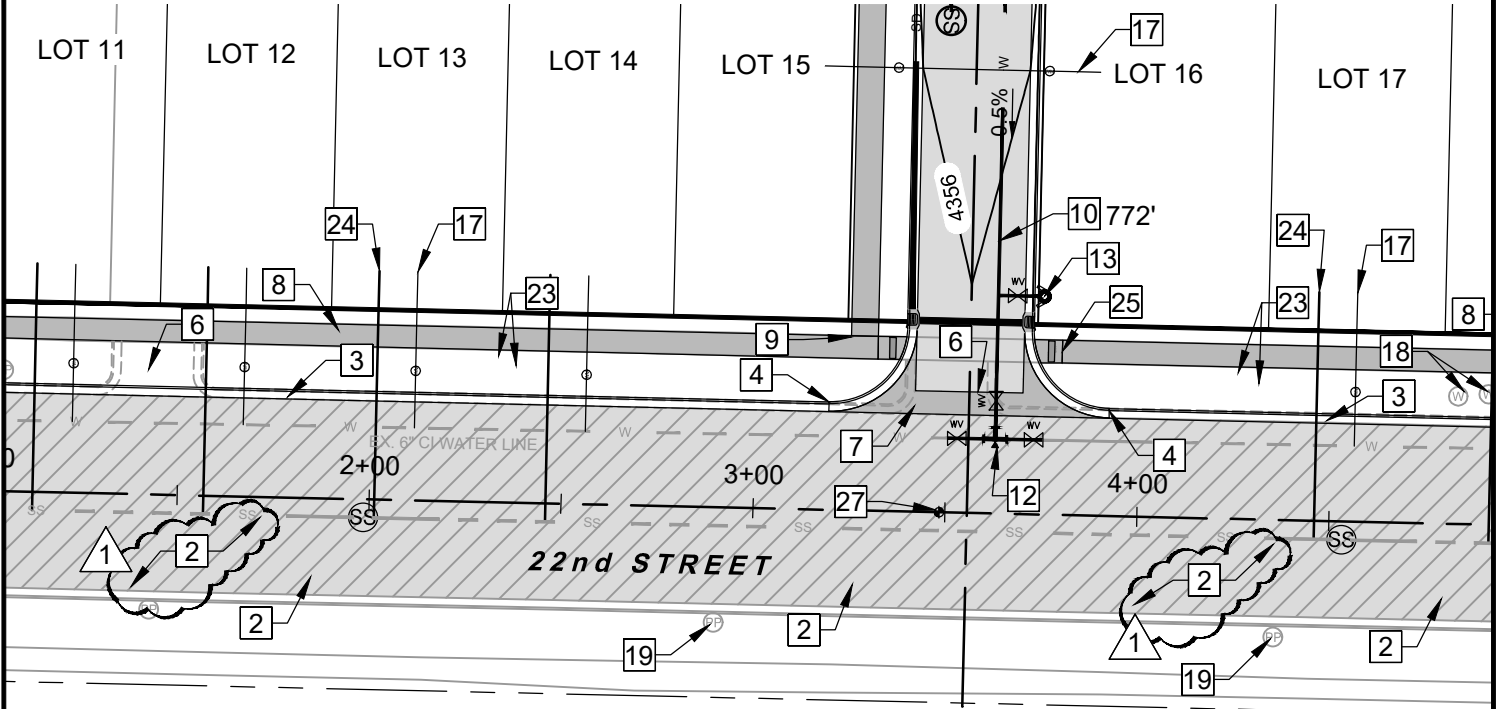




REVISION #1
GARDEN HILL SUBDIVISION
JULY 18, 2017



REVISIONS



JULY 18, 2017
UPDATE KEYED REFERENCE FROM 1 TO 2 ON
SHEETS CE1-01 & CE2-01

NOTE: ASPHALT SHALL BE COMPLETELY
REMOVED FROM PATCH AREAS ON 22ND, 21ST
AND ADAMS



JULY 18, 2017
LINE ITEM #43 - '10" UNTREATED BASE
COURSE - NEW & PATCHED ASPHALT'
CHANGE QUANTITY FROM 2,607 TON
TO 1,680 TON

THIS INCLUDES 10" ON PORTER AVE.
PAVEMENT AREA, 10" ABOVE THE
LATERAL AREAS ON 22ND, AND 2"
ACROSS PATCH AREAS (ASSUMED
VALUE IN THE CASE THAT THE EXIST.
ASPHALT THICKNESS IS 2" GREATER
THAN MAX. NEW PAVEMENT THICKNESS,
7")



SCALE: 1" = 50'